

The Partnership and the Big Picture

Partnership for a Healthy Delaware
County

March 16, 2016

Top 10 Public Health Issues

- 2016 Presidential & Congressional Elections
- FY2017 Budget/Appropriations
- Affordable Care Act & Prevention & Public Health Fund
- Opioid Abuse/Overdose Prevention
- E-Cigarettes & Other Tobacco Products
- Mental Health & Violence Prevention
- Climate Change & Clean Air
- Transportation Law Implementation
- Child Nutrition Reauthorization
- Menu Labeling



Improving population health planning in Ohio

- Report from Health Policy Institute of Ohio
- Association of Ohio Health Commissioners
- Healthcare Organizations
- Hospital Organizations
- Ohio Department of Health

State Innovation Model (SIM)

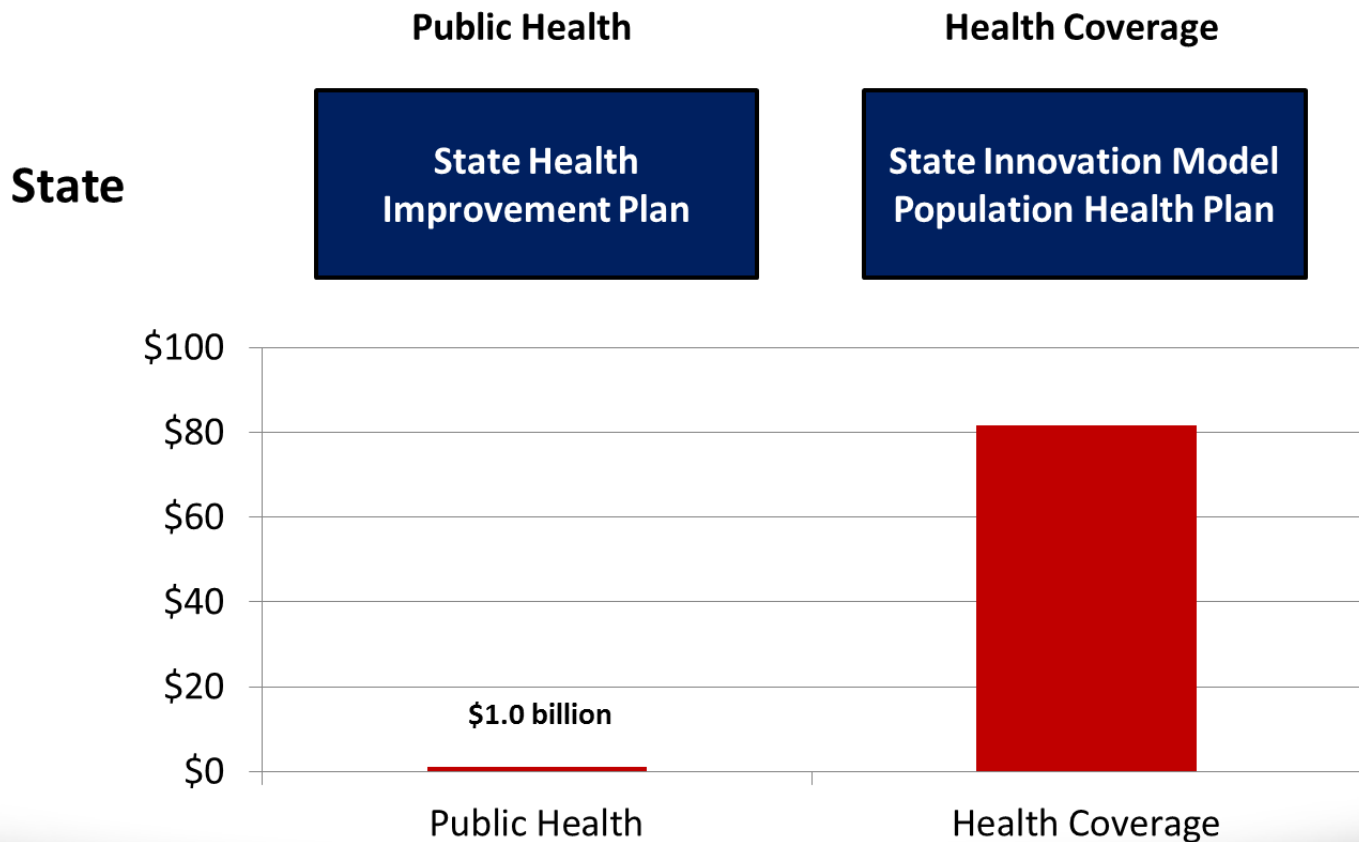
- Four Year - \$75 Million
- Office of Health Transformation
- Provide recommendations to strengthen the population health planning and implementation infrastructure
- Align population health priority areas, measures, objectives and evidence-based strategies with the design and implementation of the PCMH model

America's Health Rankings 2015

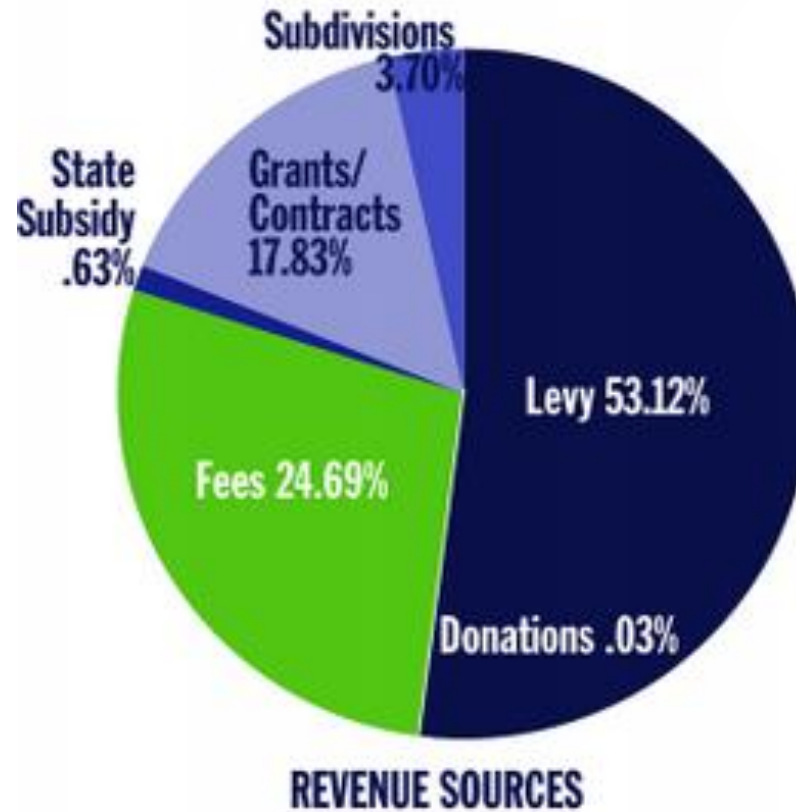


39th in overall health rankings
44th in infant mortality
43rd in obesity
39th in smoking
42nd in diabetes
40th in cardiovascular deaths
41st in cancer deaths

Separate Strategies Not Sufficient

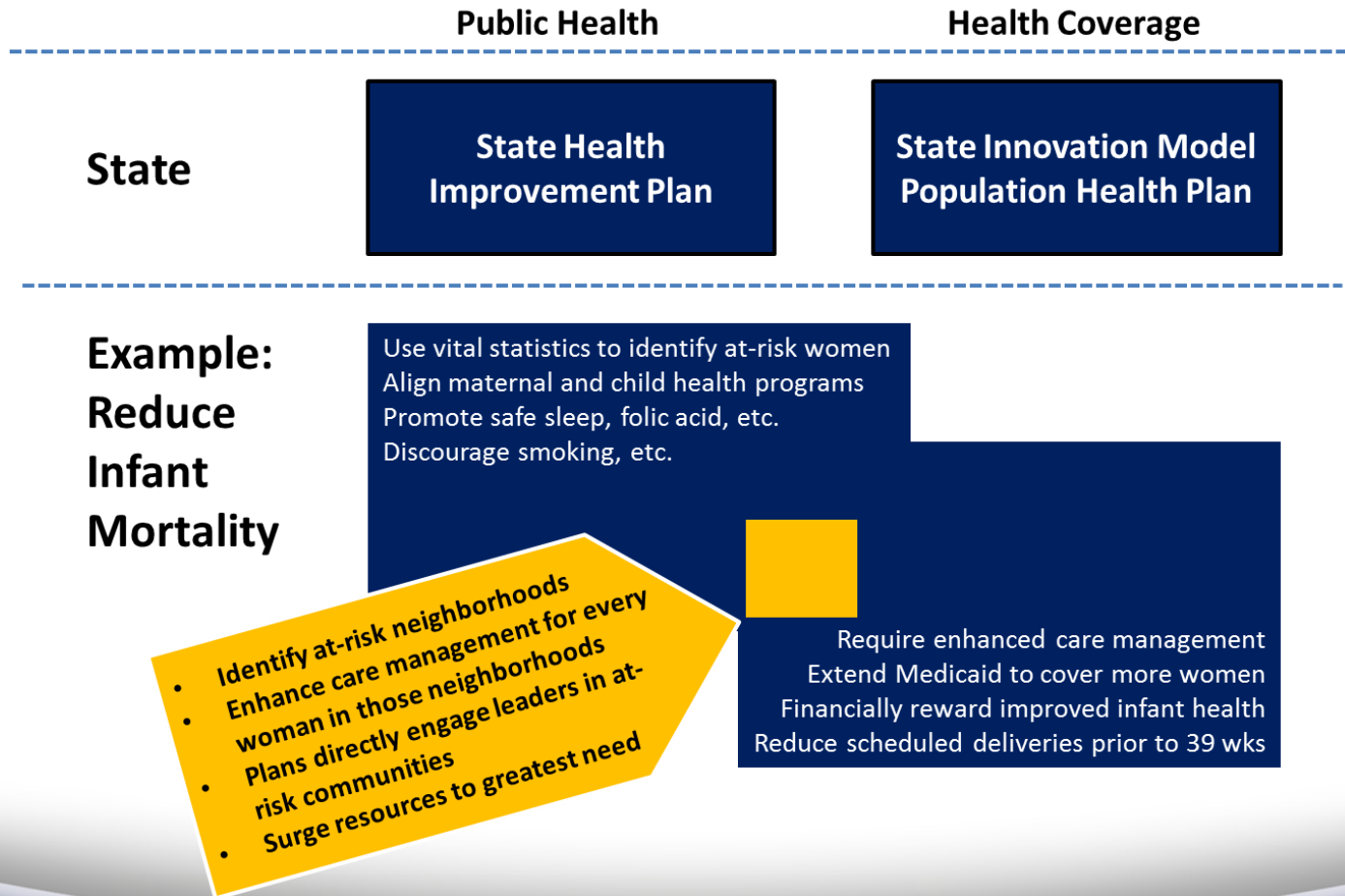


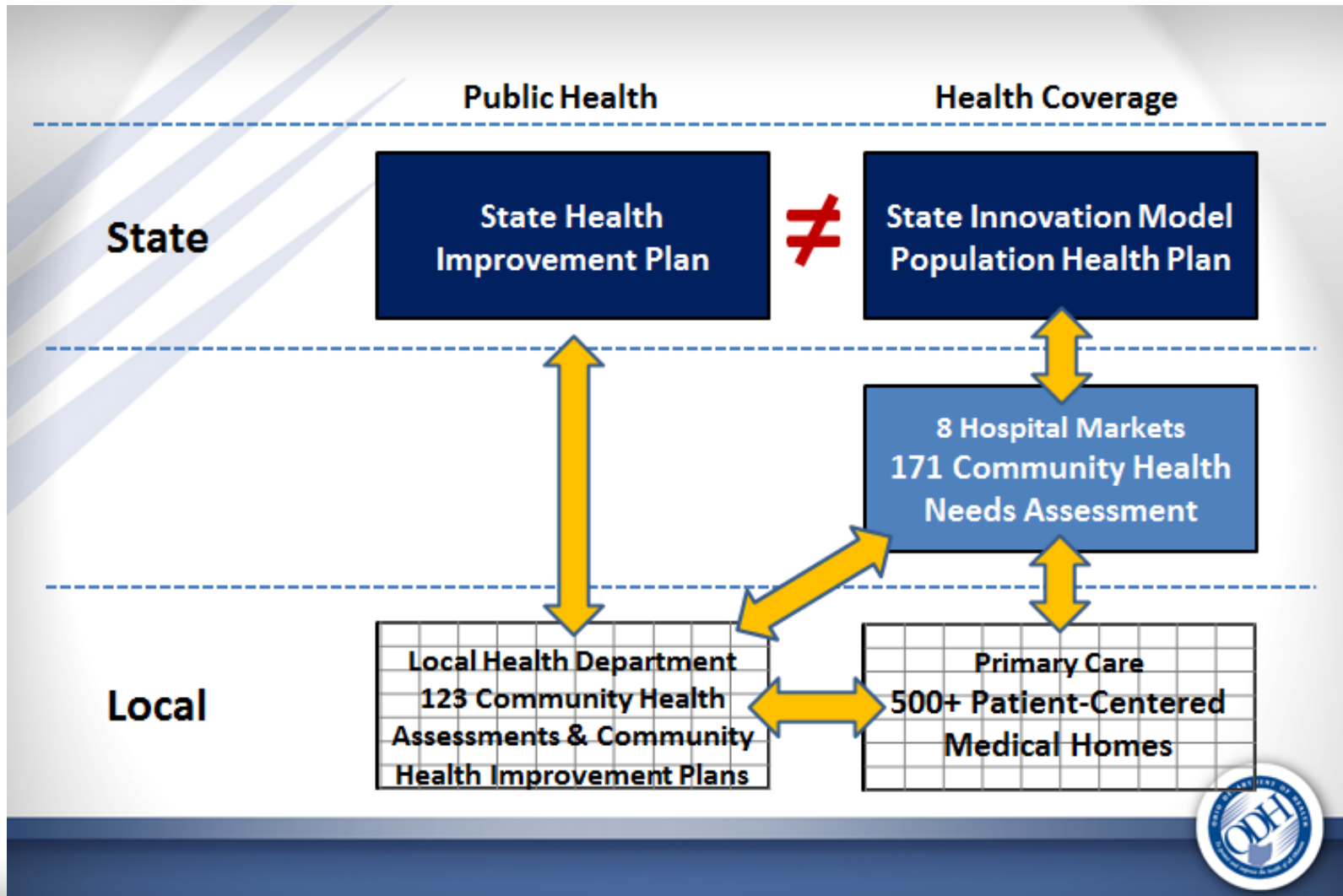
Delaware General Health District



OHIO DEPARTMENT OF HEALTH PLAN

Align Public Health and Coverage





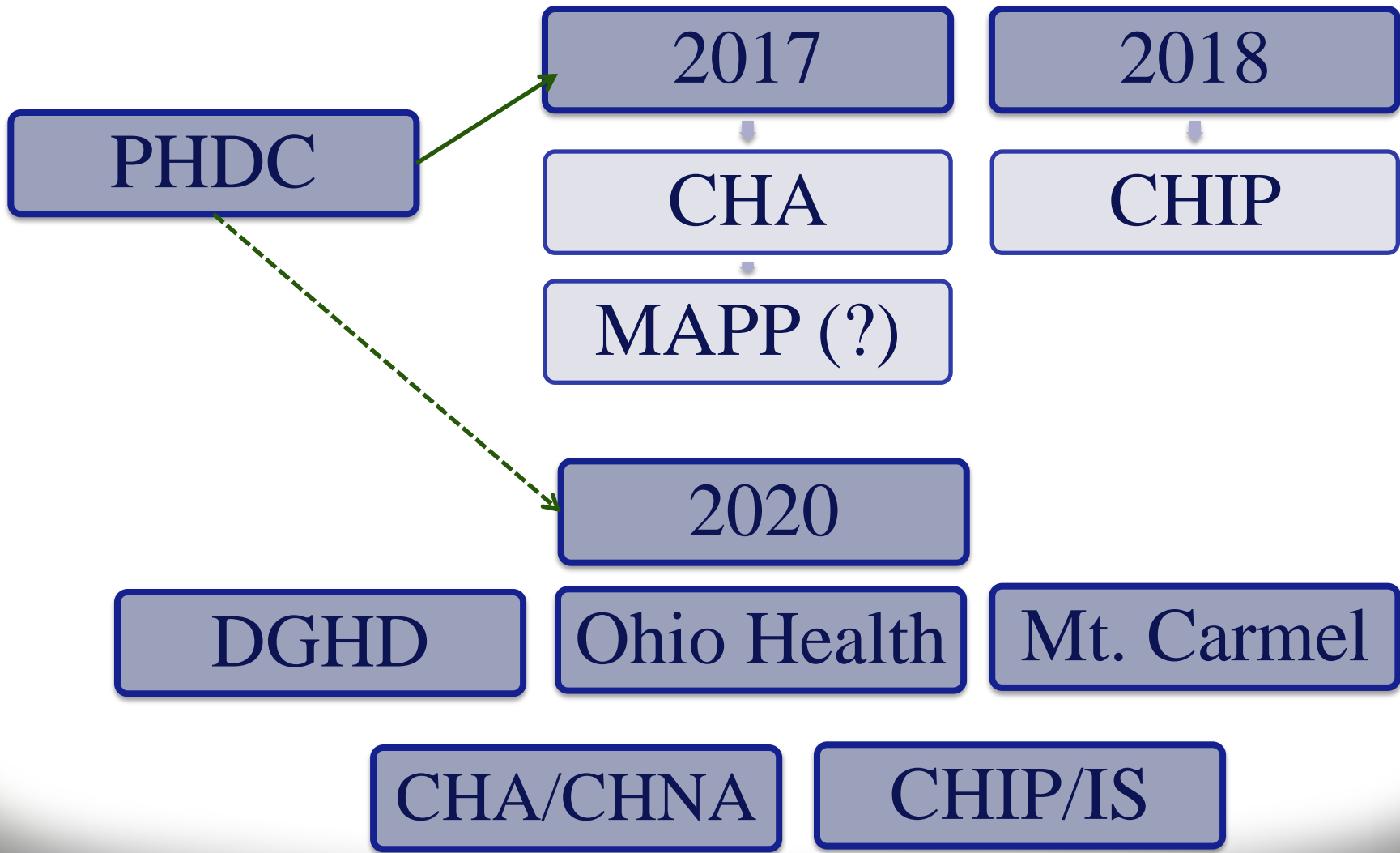
Population health planning activity	2016	2017	2018	2019	2020	2021	2022	2023
State and local public health accreditation	Public Health Accreditation Board (PHAB) accredits Ohio Department of Health (2015)		Local health departments (LHDs) required to apply for PHAB accreditation		LHDs required to be PHAB accredited			
State health assessment (SHA) and state health improvement plan (SHIP)	Release of SHA and SHIP			Release of SHA and SHIP			Release of SHA and SHIP	
		SHIP (2017-2019)			SHIP (2020-2022)			SHIP (2023-2025) →
Local health department and tax-exempt hospital assessments and plans	State enacts tax-exempt hospital and LHD reporting requirements and issues guidance for local assessments and improvement plans	Existing tax-exempt hospital and LHD assessments and plans submitted to state			Tax-exempt hospital and LHD assessments and plans submitted to state			Tax-exempt hospital and LHD assessments and plans submitted to state
					Tax-exempt hospital and LHD plans (2020-2022)			Tax-exempt hospital and LHD plans (2023-2025) →
		Tax-exempt hospital Schedule H information annual reporting						

Assessment = Tax-exempt hospital community health needs assessment; local health department community health assessment

Plan = Tax-exempt hospital implementation strategy; local health department community health improvement plan

Tax-exempt hospitals = All nonprofit and government hospitals recognized as tax-exempt charitable organizations under section 501 (c)3 of the Internal Revenue Code and that are required to comply with the Internal Revenue Service community health needs assessment requirements; 79 Fed. Reg. 78954 (Dec. 31, 2014)

Population health planning infrastructure recommendations timeline



Shelia L. Hiddleson, RN, MS

Health Commissioner

shiddleson@delawarehealth.org

740-368-1700

QUESTIONS?